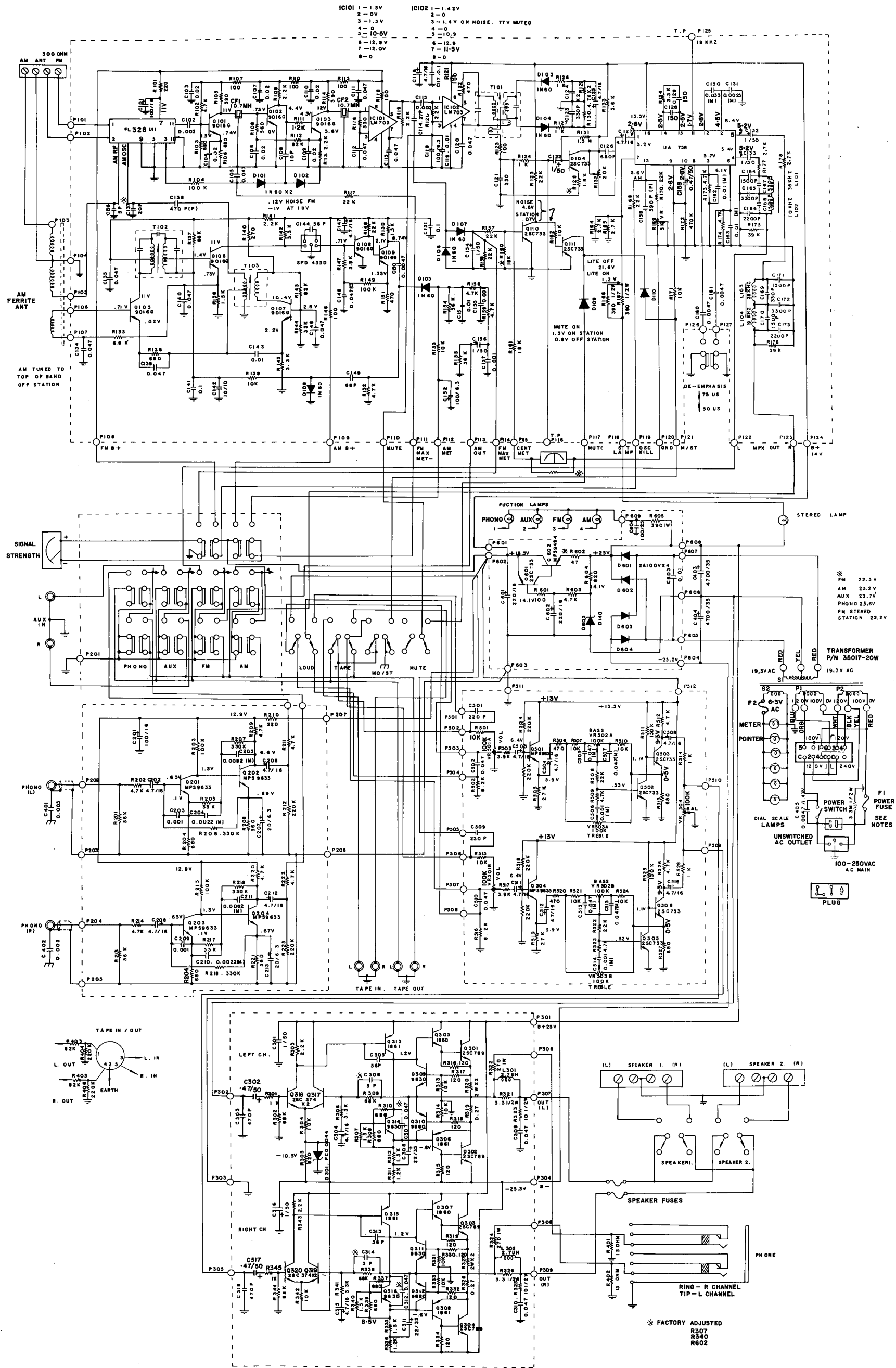


R-315 CIRCUIT DIAGRAM

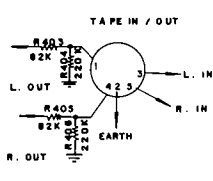
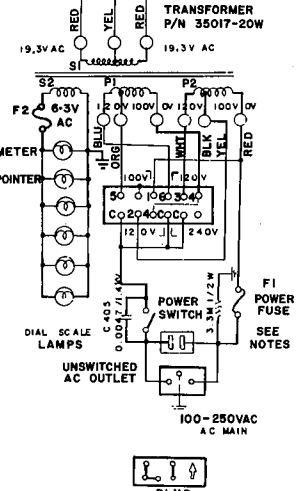
R-34S CIRCUIT DIAGRAM



IC101 1-1.5V
 2-0V
 3-1.5V
 4-0V
 5-10V
 6-12.9V
 7-12.9V
 8-0

IC102 1-1.42V
 2-0V
 3-1.4V ON NOISE, 77V MUTED
 4-0V
 5-11V
 6-11.5V
 7-11.5V
 8-0

* FM 22.5V
 AM 23.2V
 AUX 23.7V
 PHONO 23.6V
 FM STEREO STATION 22.2V



* FACTORY ADJUSTED
 R307
 R340
 R602

R-31S AND R-34S NOTES

Unless otherwise specified, all capacitors are in microfarads, all resistors are in ohms, $\frac{1}{4}$ Watt, 10% (or less) tolerance, and all voltages $\pm 10\%$, measured with 20,000 ohm per Volt VOM. 117V power line.

C306 and C314 not used in some units.

Front ends marked FL-311 or FL-315 may be used in some production.

LAMPS

Pointer	6.3V	40 mA
Function	12V	40 mA
Stereo	12V	80 mA
Dial	6.3V	220 mA

FUSES

Speaker	1.5A	Fast-Blo (R-34; 2A)
Power	1.5A	Slo-Blo @ 100-125V
	0.7A	Slo-Blo @ 220-240V
Dial	Suitable length of #30 Awg. copper (0.010 inch dia.)	

Switch (S-1) Replace only with original approved type.

